

Project by



SIRI SAMPADA HOMES<sup>TM</sup>

SIRI SAMPADA HOMES



# darpa

dream beautiful



2 & 3 BHK Luxury Apartments @ Brahmanapalli X Roads, TURKAYAMJAL

SIRI SAMPADA HOMES



# bhuvija

beauty unfolds





It's a delight to possess something that's naturally elegant. In this case it's the home that'll make space for memorable moments. The more lavish the living space, the more wonderful the memories. You see it's the ambience that brings peace to the soul.

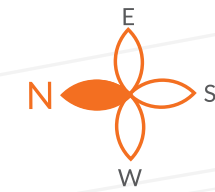
WELCOME TO  
*Luxury*

SIRI SAMPADA HOMES  
**avni**  
dream beautiful

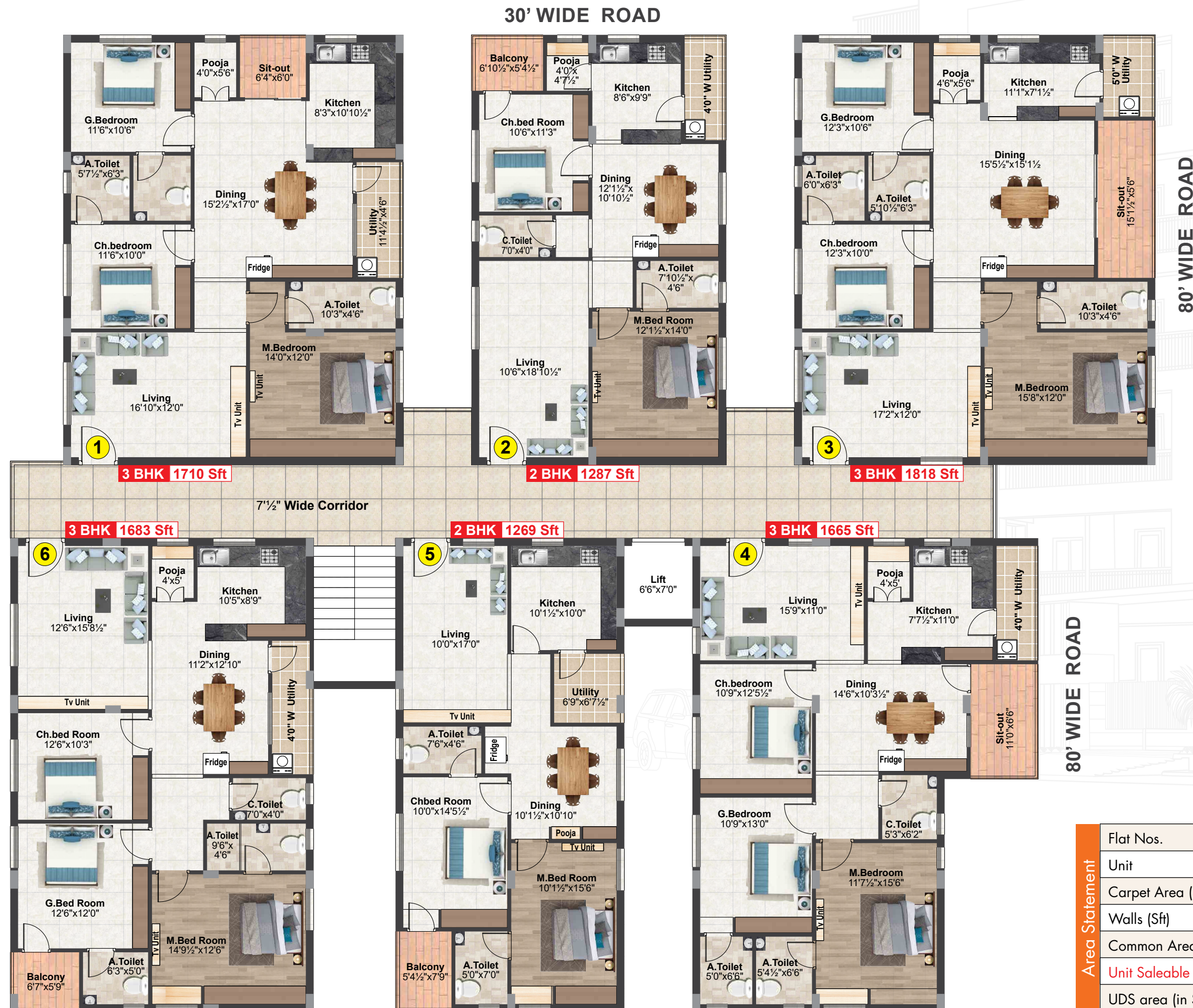


## TYPICAL FLOOR PLAN

WELL-CONNECTED  
*Luxury*



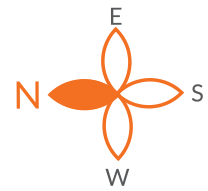
### FLAT NO. 2 WEST FACING 3D VIEW



Area Statement	Flat Nos.	1	2	3	4	5	6
	Unit	3 BHK	2 BHK	3 BHK	3 BHK	2 BHK	3 BHK
	Carpet Area (Sft)	1212.54	905.83	1291.05	1173.77	883.18	1189.2
	Walls (Sft)	142.18	113.25	141.97	140.49	115.53	139.01
	Common Areas (Sft)	355.28	267.92	384.98	350.74	279.29	354.79
	Unit Saleable Area (Sft)	1710.00	1287.00	1818.00	1665.00	1269.00	1683.00
	UDS area (in Sq.yds)	57.62	43.37	61.26	56.11	42.76	56.71



GROUND FLOOR PLAN



AREA STATEMENT	Flat Nos.	2	3	4	5	6
	Unit	2 BHK	3 BHK	3 BHK	2 BHK	3 BHK
	Carpet Area (Sft)	905.83	1291.05	1173.77	883.18	1189.2
	Walls (Sft)	113.25	141.97	140.49	115.53	139.01
	Common Areas (Sft)	267.92	384.98	350.74	279.29	354.79
	Unit Saleable Area (Sft)	1287.00	1818.00	1665.00	1269.00	1683.00
	UDS area (in Sq.yds)	43.37	61.26	56.11	42.76	56.71



BLISSFUL  
*Luxury*

FLAT NO. 3 WEST FACING 3D VIEW



Entry





### Amenities & Features

CCTV Facility

Limited flats

Car parking

Ideal location

Premium quality construction

Earthquake-resistant design

Designed as per Vasthu

Excellent ventilation

HMDA approved project

Rain water harvesting

24 X 7 security

Power backup generator  
in common areas





#### FLOORING

2'6"x2'6" Vitrified flooring in living, dining, bedrooms, kitchen.

Toilets, utility and balconies with anti-skid finish tiles.

Staircase and corridors : Granite Flooring.

#### PAINTING

Interior walls: One coat of primer & two coats of emulsion paint of asian paint or equivalent make with smooth finish & oil bound distemper for common areas.

Exterior walls: One coat of primer & two coats of Asian exterior paints or equivalent make.

#### DOORS

Main Door: Wood frame /equivalent with designer door shutter polished with melamine spray polish, with godrej or equivalent make hardware.

Internal Doors: Wood frame / equivalent with flush shutter with godrej or equivalent hardware.

#### PLASTERING

Internal: Double coat cement plastering finish with Birla putty or equivalent make.

External: Double coat cement plastering putty or texture as per elevation design.

#### TOILETS

All toilets with non slip ceramic tile flooring & 7' wall cladding with ceramic tiles WB & EWC in attached toilet and Indian WC in common toilet CERA or equivalent, hot & cold wall mixture with shower Jaquar or equivalent make.

#### STRUCTURE

R.C.C framed structure with seismic resistant design.

#### SUPER STRUCTURE

Red clay brick work with ISI standard cement mortar.



#### KITCHEN

Black granite slab for kitchen platform with tile dado up to 2' height and S.S sink niral or equivalent make. 2 taps for bore well water & drinking water with provision for RO system.

#### WINDOWS

All windows are UPVC with safety iron grills & sliding glass doors.



### SPECIFICATIONS

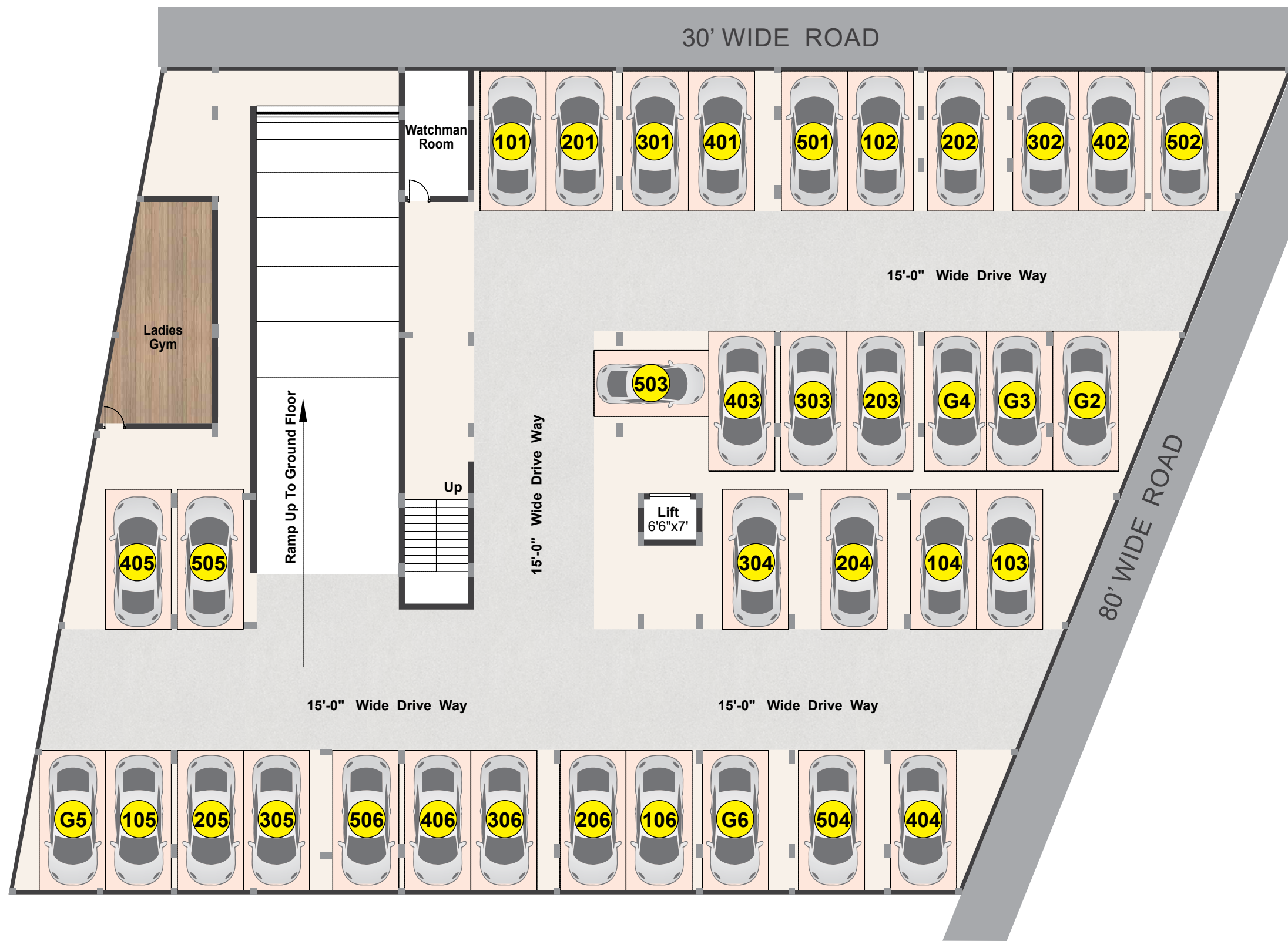


#### LIFT

10 Passengers capacity lift of Johnson or reputed make. (AVNI)  
6 Passengers capacity lift of Johnson or reputed make. (BUVIJA)

#### AMENITIES

Generator, lift, transformer with three phase meter, Municipal water & Sewerage, Car parking.



#### ELECTRICAL

Adequate electrical points with concealed copper wiring and modular switches (Anchor or equivalent make). 3 phase power supply for each flat. Individual TV & telephone points in hall & M.B.

#### GENERATOR

Generator backup for borewell, lifts and common areas.

#### NOTE

- 1) Registration Charges, GST applicable as per Govt. norms to be borne by the customers only.
- 2) Persons desirous to alter / modify their flat by prior request and additional payment to be borne by the customers only.
- 3) Cement racks, arch, etc optional with extra cost.
- 4) Amenities charges to be borne by customers only.



**SIRI SAMPADA HOMES™**

The convenience of city living is right on your doorstep. Set in the lively Siri sampada homes rewards yourself with comfort, enjoying spacious architecturally designed homes located in the heart of the most happening area of Hyderabad.

with more than a Two decade of unparalleled experience, Siri Sampada Homes is a flourishing property developers, our projects are well received by Hyderabad and our signature apartments give the residents a sense of pride for the reason that our artistic designs stand out tall among the mundane projects. we aim to continue our good work and provide the customers value for money and best possibles service.





## Amenities & Features

CCTV facility

Limited flats

Car parking

Ideal location

Premium quality construction

Earthquake-resistant design

Designed as per Vasthu

Excellent ventilation

HMDA approved project

Rain water harvesting

24 X 7 security

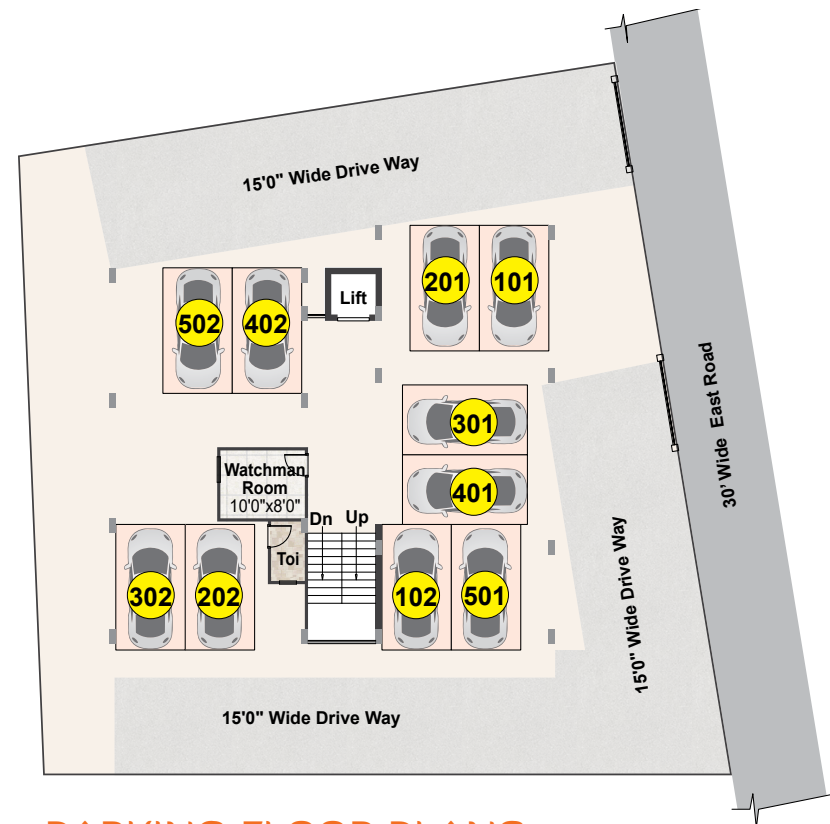
Power backup generator  
in common areas







AREA STATEMENT	Flat Nos.	1	2
	Unit	3 BHK	3 BHK
	Carpet Area (Sft)	1104.31	1055.98
	Walls (Sft)	116.67	125.16
	Common Areas (Sft)	318.02	303.86
	Unit Saleable Area (Sft)	1539.00	1485.00
	UDS area (in Sq.yds)	69.21	66.79



## PARKING FLOOR PLANS

## ONGOING PROJECTS



Luxury Gated community  
Duplex Villas @ Turkayamjal



Siri Sampada Homes Bhuvana  
@ Brahmanapalli X Roads, Turkayamjal.



WHITE CLOUD 2 & 3 BHK Flats  
@ Hayathnagar

2 & 3 BHK FLATS  
@ Nandihills near Hasthinapuram.

LAKE WEST APARTMENTS  
@ kompally.

GATED COMMUNITY  
2 & 3 BHK FLATS  
@ Kompally, Suchitra Circle  
nizamabad road.



Vision Cascade Greens @ NCL North, Kompally. (Gated community 2 & 3 BHK Flats)



Vinila (vimala) Residency 3 BHK Flats @ Nandi Hills  
Near TKR College Karmanghat

## COMPLETED PROJECTS

TULIP  
@ FCI Colony Vanasthalipuram.

SAI SRINIVASAM  
Near Karmanghat Hanuman  
Temple. Jillelaguda,

SHREE NIVAS  
@ Venkateshwara Colony,  
Hasthinapuram.

SAI SRINIVASAM  
@ RKR Enclave, Hasthinapuram.

SAI BRINDAVAN  
@ Teachers Colony, Hasthinapuram.

GOKUL RESIDENCY  
@ Gokul Enclave, Hasthinapuram.

SAI MADHAVAM  
@ Jayakrishna enclave, Hasthinapuram.

SAI MADHAVAM-II  
@ Dwaraka nagar, Hasthinapuram.

SAI GREENZ  
@ Agricultural Colony, Hasthinapuram.

SAI SUDHERSHANAM  
@ Venkataramana Colony,  
Hasthinapuram.

FORTUNE HEIGHTS  
@ Teachers Colony, Hasthinapuram.

HASTINA PRIDE  
@ Vishweshwaraiah Engg. Society,  
Hasthinapuram.

SUGATHI RESIDENCY  
@ Prashanth Nagar, Vanasthalipuram.

TLR RESIDENCY  
Opp. Shyam Hospital, Beside BD Reddy &  
Essar Petrol pump @ Z.P Road, Teachers Colony,  
Hasthinapuram. (Office Location)

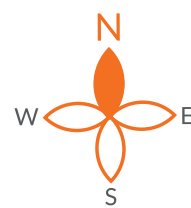
SAI BRINDAVAN GARDENS-I

SAI BRINDAVAN GARDENS-II

SAI BRINDAVAN GARDENS-III  
@ Turkayamjal, Nagarjuna Sagar Road (Open Plots)

SAI SRINIVASAM  
@ Turkayamjal, Nagarjuna Sagar Road (Open Plots)

FORTUNE VILLAS  
@ Turkayamjal, Nagarjuna Sagar Road (Open Plots)



## TYPICAL FLOOR PLAN



# LOCATION MAP



‘Honour’  
WRG Certifications hereby certifies that the Quality Management System

www.sirisampadahomes.com



Promoters  
**SIRI SAMPADA HOMES**<sup>TM</sup>  
Flat No. 101 & 102, TLR Residency,  
beside Bobbili Damodar Reddy Convention Hall, Opp.  
Shyam Hospital, Z.P Road, Hasthinapuram, Hyd -079.  
e-mail: sirisampadahomes@gmail.com  
Cell: 96666 03481, 96666 03482,  
83094 50851, 99590 54110,  
82473 07702, 88666 66992,  
98490 25257.



Scan this QR code to view the Website



Scan this QR code to view the site Google Coordinates

Architects & Engineers  
**KAUSHIKI DESIGN GROUP**  
Mig-133, Bathukamma Kunta, Hyderabad.  
Ph: 29801216, 65599603,  
e-mail: kaushikidesigngroup@gmail.com

NOTE : This brochure is only a conceptual presenta-  
tion of the project and not a legal offering.  
The promoters reserve the right to make changes in  
plans, specifications and elevation as deemed fit.